



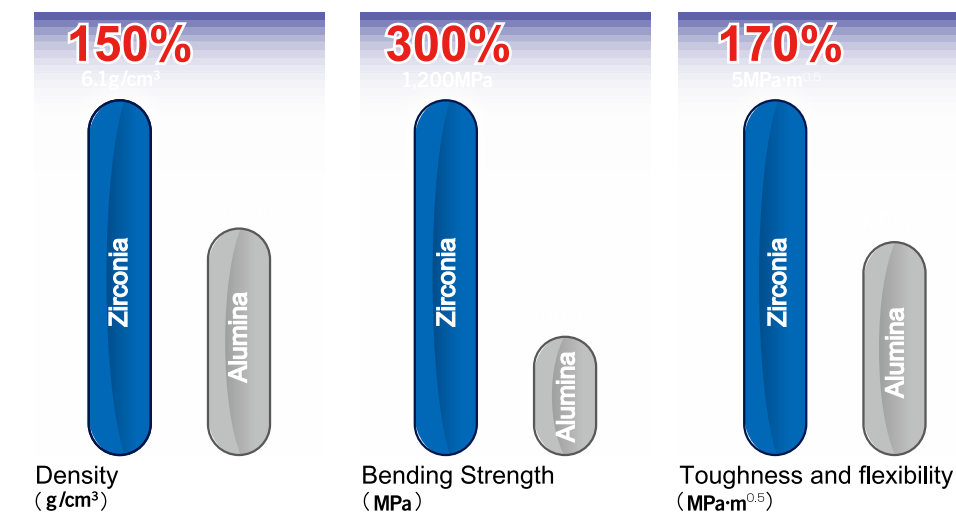
6 features of COBY™

ZIRCONIA CERAMIC BRACKETS

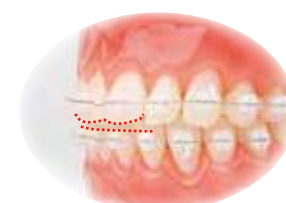


1) Excellent Toughness and Flexibility

Great material reduces fracture.



2) Low Profile



Zirconia Ceramic provides low profile, compact shape, which reduces occlusal interference.

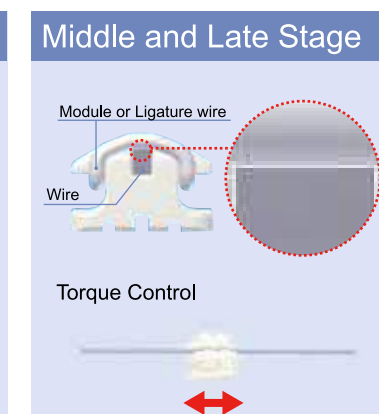
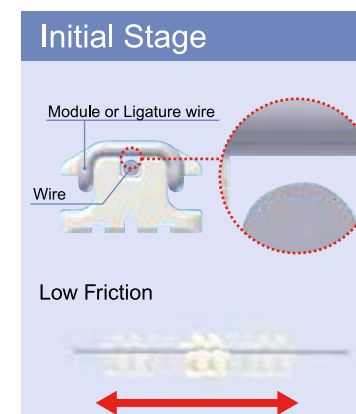
3) Shoulder System

Shoulder



At initial stage, it provides speedy treatment, and middle and late stage, it provides positive torque control.

Comparing to Composite and Alumina



4) Bonding Base

Suitable for any kind of adhesion bond.

Light Cure OK
Chemical Cure OK

Central Base



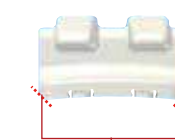
Maximum retentive force exercises in the central undercut part.

Outside Base



Outside base designed into shallow undercut for smooth debonding.

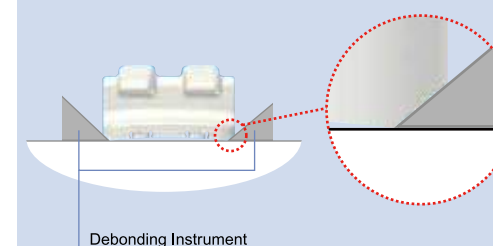
5) Safety Debonding



Approach point

Approach points for debonding instrument on mesial / distal corners of base provide smooth and safe debonding without breakage of bracket.

Smooth Debonding



Debonding Instrument

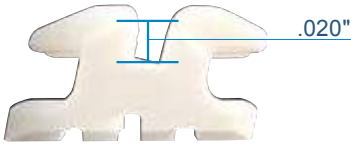
6) Aesthetics

Similar to natural teeth.

Color



-Straight .018" slot-



-Wire Selection for .018" slot.-

[.018" x .025" Slots]
Low friction
Round wire .012" / .014" / .016" / .018"
Rect. wire .016" x .016"

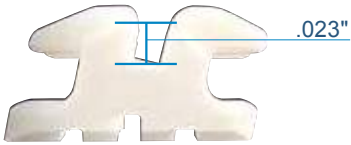
Torque control
Rect. wire .016" x .022"
.017" x .025"
.018" x .025"

	Code No.	Description	Tooth
1 Case kit	27880	STR-018-3-3	<div><div>3+3</div><div>3+3</div></div>
	27881	STR-018-3-3H ✖	
	27884	STR-018-5-5	<div><div>5+5</div><div>5+5</div></div>
	27885	STR-018-5-5H ✖	

✖ Only UL3 : With the hook.

	No.	Description	Tooth	Color Marking	Torq.	Ang.
Upper (10 ea.)	27800	STR-U1R-018	<div><div>1</div><div>1</div></div>	<div><div></div><div></div></div>	12	5
	27801	STR-U1L-018	<div><div>1</div><div>1</div></div>	<div><div></div><div></div></div>	12	5
	27802	STR-U2R-018	<div><div>2</div><div>2</div></div>	<div><div></div><div></div></div>	8	9
	27803	STR-U2L-018	<div><div>2</div><div>2</div></div>	<div><div></div><div></div></div>	8	9
	27804	STR-U3R-018	<div><div>3</div><div>3</div></div>	<div><div></div><div></div></div>	-2	11
	27805	STR-U3L-018	<div><div>3</div><div>3</div></div>	<div><div></div><div></div></div>	-2	11
	27806	STR-U3R-018H	<div><div>3</div><div>3</div></div>	<div><div></div><div></div></div>	-2	11
	27807	STR-U3L-018H	<div><div>3</div><div>3</div></div>	<div><div></div><div></div></div>	-2	11
Lower (10 ea.)	27808	STR-U45-018	<div><div>54</div><div>45</div></div>	<div><div></div><div></div></div>	-7	0
	27811	STR-L12-018	<div><div>21</div><div>12</div></div>	<div><div></div><div></div></div>	0	0
	27813	STR-L3R-018	<div><div>3</div><div>3</div></div>	<div><div></div><div></div></div>	-11	7
	27814	STR-L3L-018	<div><div>3</div><div>3</div></div>	<div><div></div><div></div></div>	-11	7
	27815	STR-L3R-018H	<div><div>3</div><div>3</div></div>	<div><div></div><div></div></div>	-11	7
	27816	STR-L3L-018H	<div><div>3</div><div>3</div></div>	<div><div></div><div></div></div>	-11	7
	27817	STR-L4-018	<div><div>4</div><div>4</div></div>	<div><div></div><div></div></div>	-17	0
	27820	STR-L5-018	<div><div>5</div><div>5</div></div>	<div><div></div><div></div></div>	-22	0

-Straight .022" slot-



-Wire Selection for .022" slot.-

[.022" x .028" Slots]
Low friction
Round wire .012" / .014" / .016" / .018" / .020"
Rect. wire .016" x .022"

Torque control
Rect. wire .017" x .025"
.018" x .025"
.019" x .025"
.021" x .025"
.022" x .028"

	Code No.	Description	Tooth
1 Case kit	27882	STR-022-3-3	<div><div>3+3</div><div>3+3</div></div>
	27883	STR-022-3-3H ✖	
	27886	STR-022-5-5	<div><div>5+5</div><div>5+5</div></div>
	27887	STR-022-5-5H ✖	

✖ Only UL3 : With the hook.

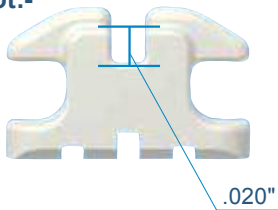
	No.	Description	Tooth	Color Marking	Torq.	Ang.
Upper (10 ea.)	27840	STR-U1R-022	<div><div>1</div><div>1</div></div>	<div><div></div><div></div></div>	12	5
	27841	STR-U1L-022	<div><div>1</div><div>1</div></div>	<div><div></div><div></div></div>	12	5
	27842	STR-U2R-022	<div><div>2</div><div>2</div></div>	<div><div></div><div></div></div>	8	9
	27843	STR-U2L-022	<div><div>2</div><div>2</div></div>	<div><div></div><div></div></div>	8	9
	27844	STR-U3R-022	<div><div>3</div><div>3</div></div>	<div><div></div><div></div></div>	-2	11
	27845	STR-U3L-022	<div><div>3</div><div>3</div></div>	<div><div></div><div></div></div>	-2	11
	27846	STR-U3R-022H	<div><div>3</div><div>3</div></div>	<div><div></div><div></div></div>	-2	11
	27847	STR-U3L-022H	<div><div>3</div><div>3</div></div>	<div><div></div><div></div></div>	-2	11
Lower (10 ea.)	27848	STR-U45-022	<div><div>54</div><div>45</div></div>	<div><div></div><div></div></div>	-7	0
	27851	STR-L12-022	<div><div>21</div><div>12</div></div>	<div><div></div><div></div></div>	0	0
	27853	STR-L3R-022	<div><div>3</div><div>3</div></div>	<div><div></div><div></div></div>	-11	7
	27854	STR-L3L-022	<div><div>3</div><div>3</div></div>	<div><div></div><div></div></div>	-11	7
	27855	STR-L3R-022H	<div><div>3</div><div>3</div></div>	<div><div></div><div></div></div>	-11	7
	27856	STR-L3L-022H	<div><div>3</div><div>3</div></div>	<div><div></div><div></div></div>	-11	7
	27857	STR-L4-022	<div><div>4</div><div>4</div></div>	<div><div></div><div></div></div>	-17	0
	27860	STR-L5-022	<div><div>5</div><div>5</div></div>	<div><div></div><div></div></div>	-22	0

-Standard .018" slot-

-Wire Selection for .018" slot.-

[.018" x .025" Slots]
Low friction
Round wire .012" / .014" / .016" / .018"
Rect. wire .016" x .016"

Torque control
Rect. wire .016" x .022"
.017" x .025"
.018" x .025"



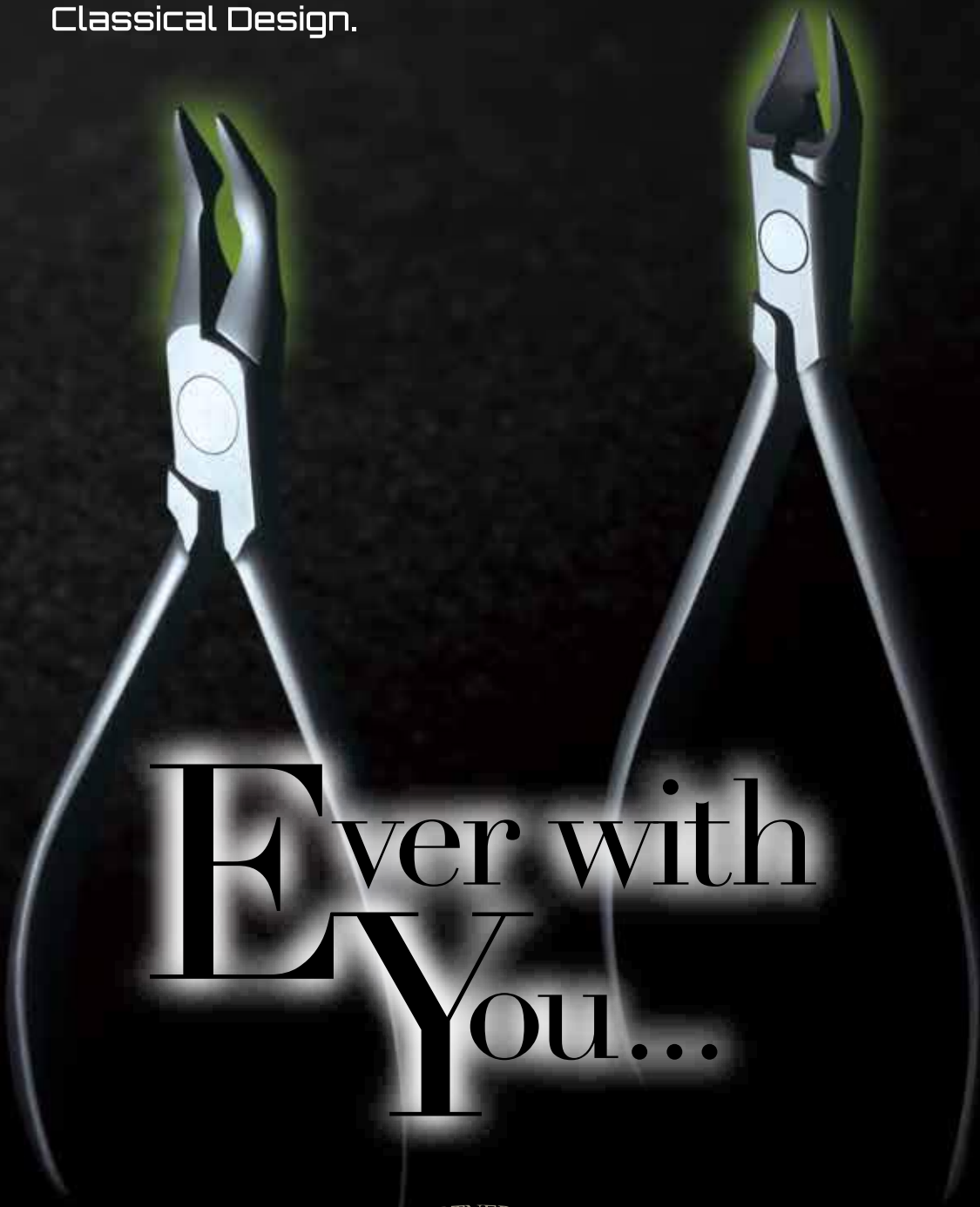
	No.	Description	Tooth	Color Marking	Torq.	Ang.
Upper & Lower (10 ea.)	27870	STD-U1-018	<div><div>1</div><div>1</div></div>	<div><div></div><div></div></div>	0	0
	27871	STD-U2-018	<div><div>2</div><div>2</div></div>	<div><div></div><div></div></div>	0	0
	27872	STD-345-018	<div><div>543</div><div>345</div><div>543</div><div>345</div></div>	<div><div></div><div></div></div>	0	0
	27873	STD-L12-018	<div><div>21</div><div>12</div></div>	<div><div></div><div></div></div>	0	0
1 Case Kit	27890	STD-018-3-3	<div><div>3+3</div><div>3+3</div></div>	<div><div></div><div></div></div>	-	-
	27892	STD-018-5-5	<div><div>5+5</div><div>5+5</div></div>	<div><div></div><div></div></div>	-	-

EVERFine

EVERClassic

Traditional
and
Classical Design.

Fine Tips
and
Supple Curved Handle.



*Cut excess ligature wire.

*Hard material inserts ensure cutting of ligature wire and elastic.

*Joint part has changed from 3pc(YS) to 2pc(EVER Fine). This change can reduce the problem of rust in joint part.



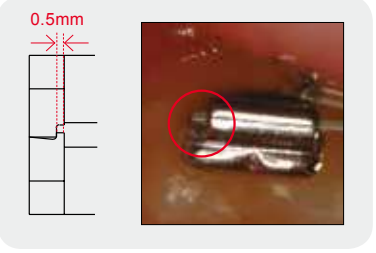
Size / 124mm

Size / 147mm

606L T/C
No.27607

*Cut up to

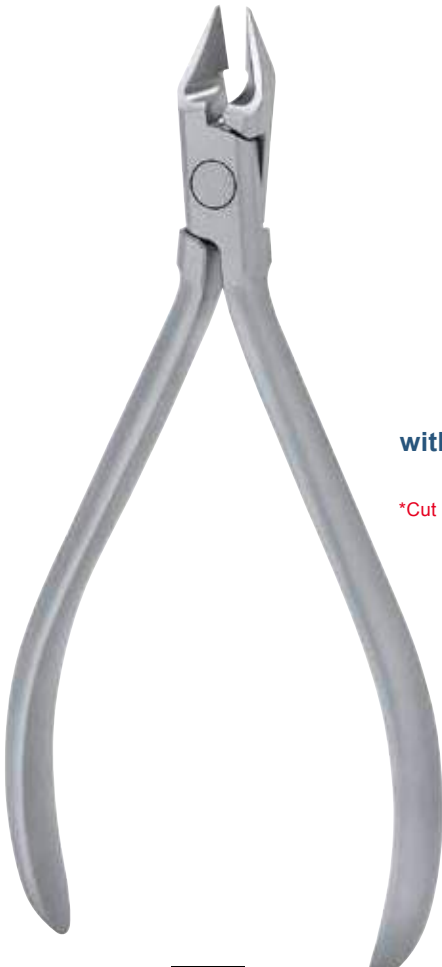
- Round wire .012"-.026"
- Rect. wire .016"x.016"-.022"x.028"



606S T/C
606L T/C



*Cut up to .014" (ø0.35mm)



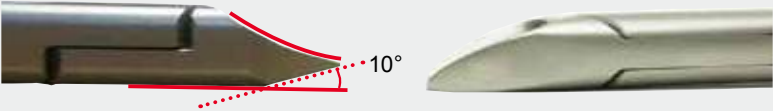
*Cut up to .012" (ø0.30mm)

Fine

- *To avoid breakage, insert hard material on the tip.
- *Fine curved shape provide performance to cut ligature wire on crowded area, dislocated area easily.



*10° angle and fine curve allow easy to access both pre molars and molars.





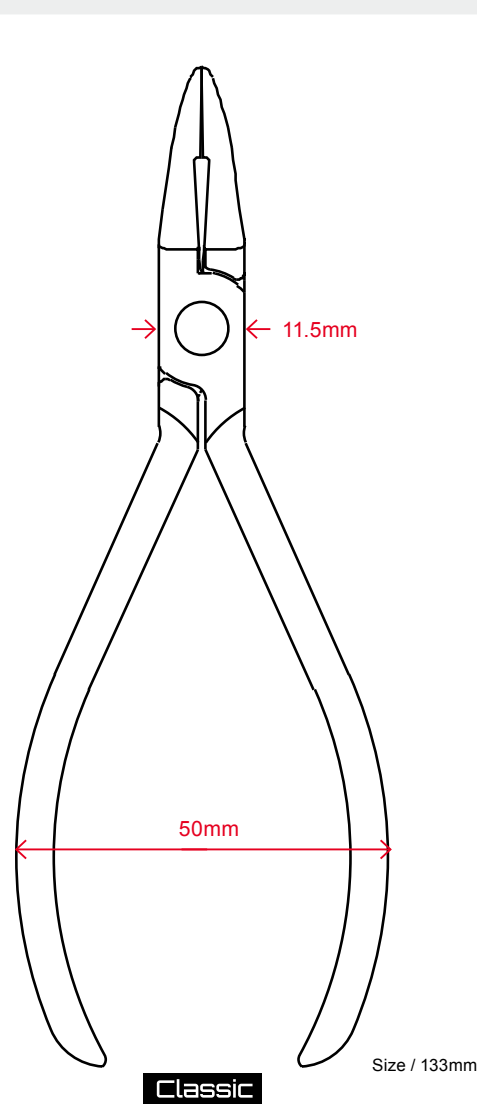
Orthodontic Pliers **EVER**

Classic

Traditional and classical design fascinate artistic mind.

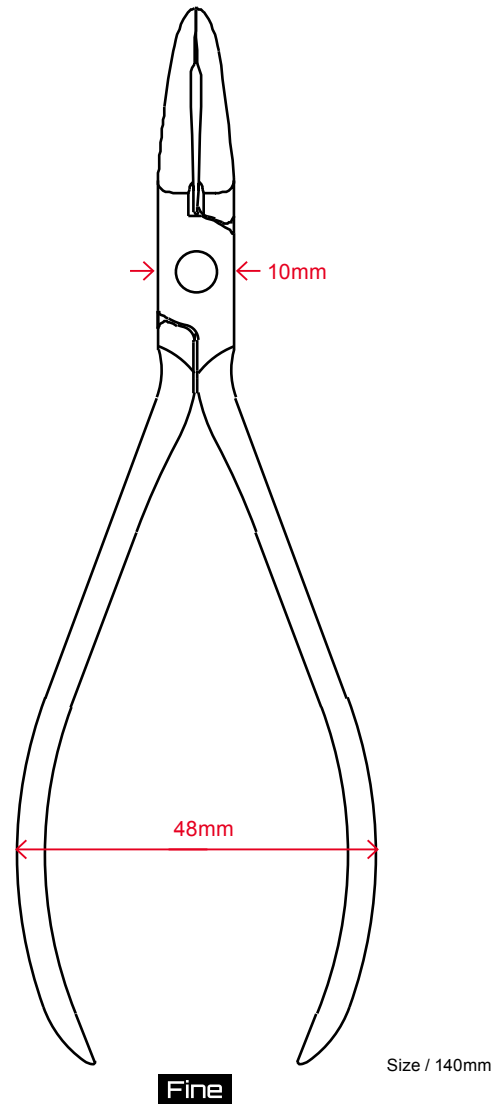
Fine

Supple curved handle narrow box joint fascinate new generations.



Classic

Size / 133mm



Fine

Size / 140mm

-Utility Pliers-

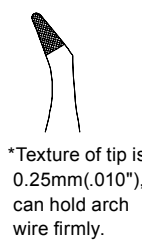


Classic

**421
Weingart
No.27421**

*Insert, remove the main wire.

*Multi purposes for tying ligature etc.



*Texture of tip is 0.25mm(.010"), can hold arch wire firmly.



Fine

**441
Weingart
No.27441**



*Texture of tip is 0.25mm(.010"), can hold arch wire firmly.

-Bending Pliers-

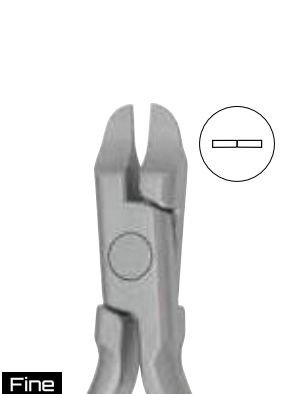


Classic

**415
Tweed Arch
No.27415**

*Maximum wire capacity .022"x.028"

*Hold arch wire, apply torq, offset-bend, inset-bend.



Fine

**455
Tweed Arch
No.27455**



-Bending Pliers-



Classic

**417
Three Jaw
No.27417**

*Maximum wire capacity .036"

*Quad Helix, lingual arch, activate of main wire.



Fine

**457
Three Jaw
No.27457**



Classic

**418
Bird Beak
No.27418**

*Maximum wire capacity .036"

*Bend retainer wire, clasp.



Fine

**458
Bird Beak
No.27458**



-Utility Pliers-



Classic

**420
How
No.27420**

*Insert, remove the main wire.

*Bend ligature wire, UA.



Fine

**442
How
No.27442**



Classic

**422
Utility
No.27422**

*Texture of tip is 0.25mm(.010"), can hold arch wire firmly.

*Insert, remove the main wire.

*Multi purposes for tying ligature etc.



Fine

**440
Utility
No.27440**



*Texture of tip is 0.25mm(.010"), can hold arch wire firmly.



Classic

**414
Young
No.27414**

*Maximum wire capacity .040"

*Bend retainer wire, adjust inner bow with three steps. (1.4mm, 3.0mm, 4.5mm in diameter)



Fine

**454
Young
No.27454**



Classic

**416
Tweed Loop Forming
No.27416**

*Maximum wire capacity .022"x.028"

*Round beak is shaped 3 layers of cylinders (1.25mm, 1.85mm, 2.26mm in diameter) can be used for closing helical loop, helical loop, omega loop.



Fine

**456
Tweed Loop Forming
No.27456**



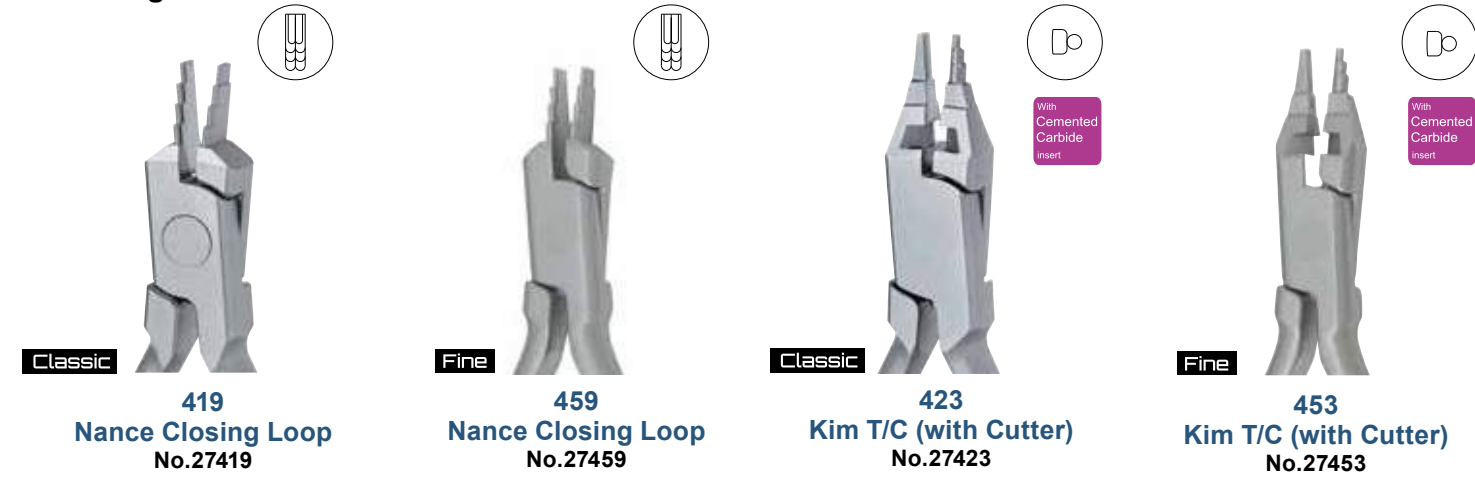


Orthodontic Pliers **EVER**



*Traditional and classical design fascinate artistic mind.
*Matte surface can avoid reflection of pliers under bright light.

-Bending Pliers-



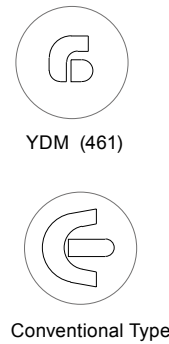
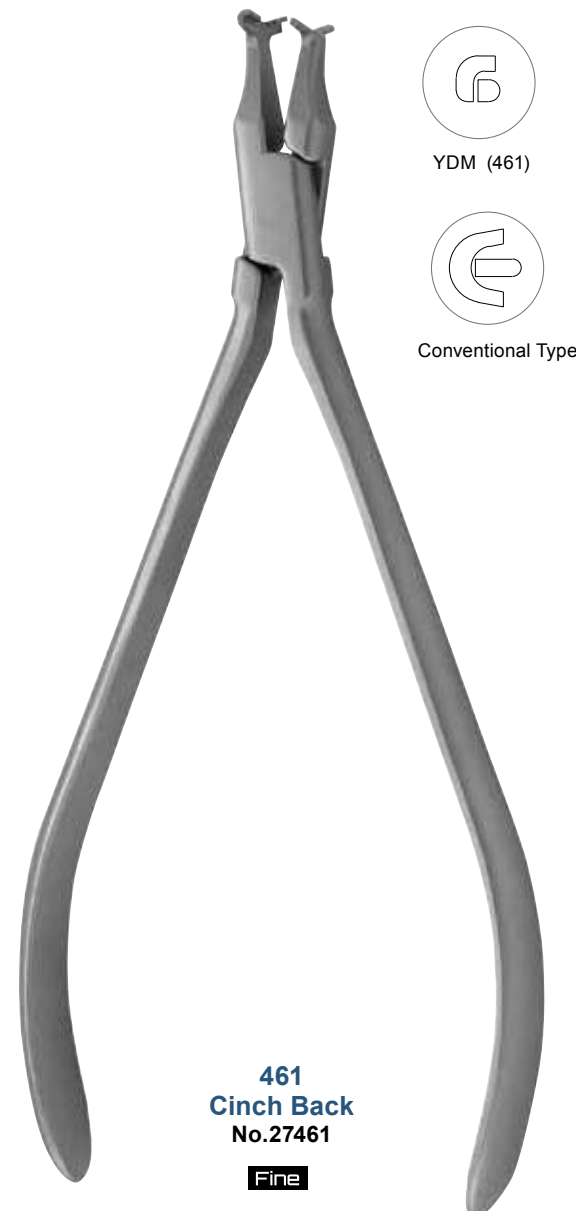
*Maximum wire capacity .022"
*With using each step (3.5mm, 4.5mm, 5.5mm, 6.5mm), arrange the loop wire, apply torque on MEAW loop.

*Maximum wire capacity .016"x.022"
*Cut up to .020"
*Bend MEAW loop.

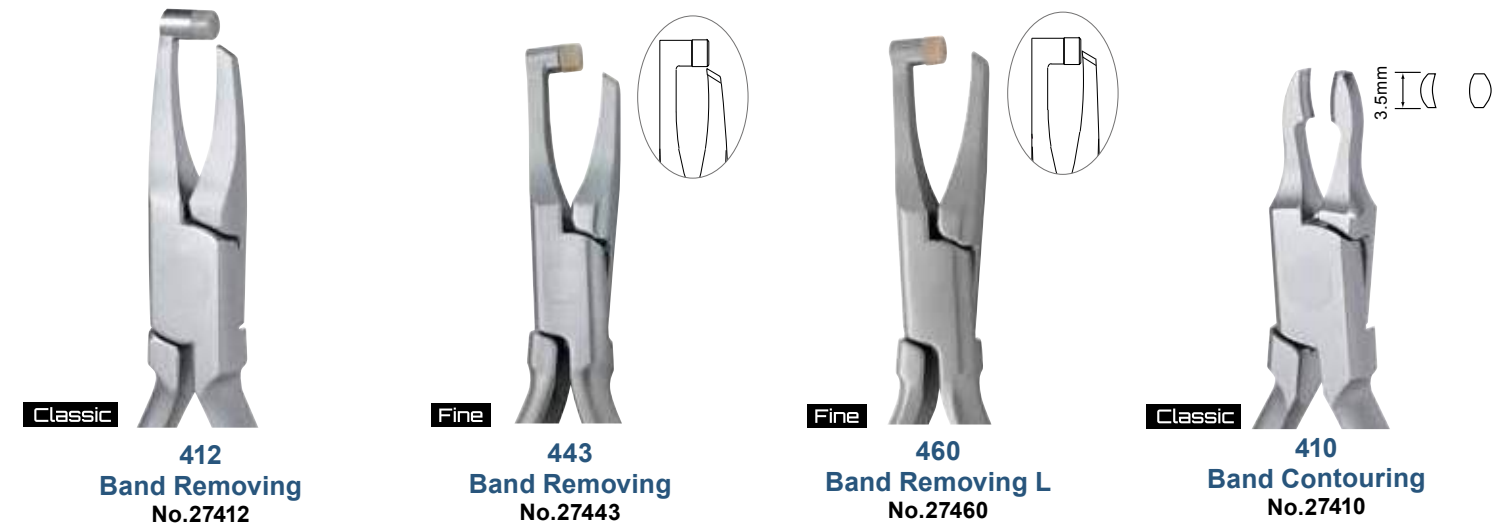
-Bending Pliers-



*Maximum wire capacity .020"
*Cut up to .020"
*Designed for circle hook, tear drop.



-Banding Pliers-



-Banding Pliers-



-Debonding Pliers-



-Crimping Pliers-





-Aligner Pliers-

- *With fine tips to ensure to insert into lingual or narrow part,crowded teeth.
- *With long handle to ensure to insert into lingual or narrow part,crowded teeth.
- *Matte surface can avoid reflection of pliers under bright light.
- *Supple curved handle fits female dentists.



448
Tear Drop
No.27448



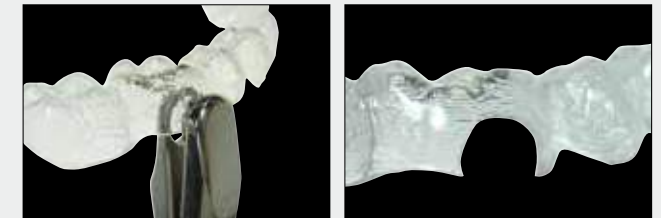
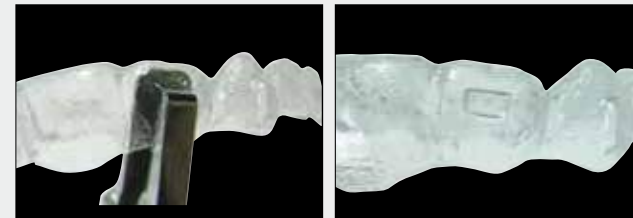
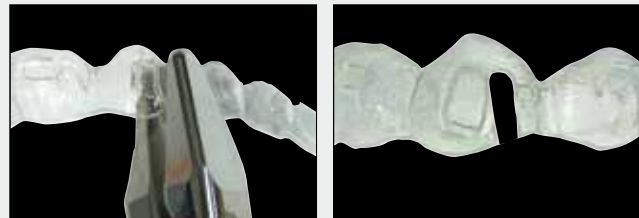
449
Vertical
No.27449



450
Horizontal
No.27450



451
Hole Punch
No.27451



Universal T/C

No.22001



Convertible Cap Removing Pliers



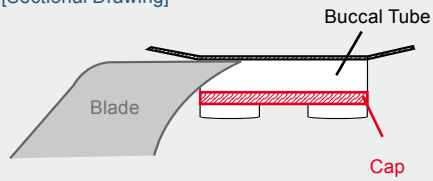
No.27934



1) Insert the blade edge parallel to cap from mesial side of buccal tube slot.



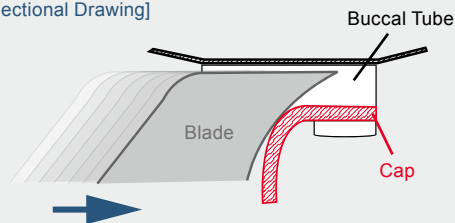
[Sectional Drawing]



2) By gripping the handle, Move the blade to distal side and remove the cap easily.



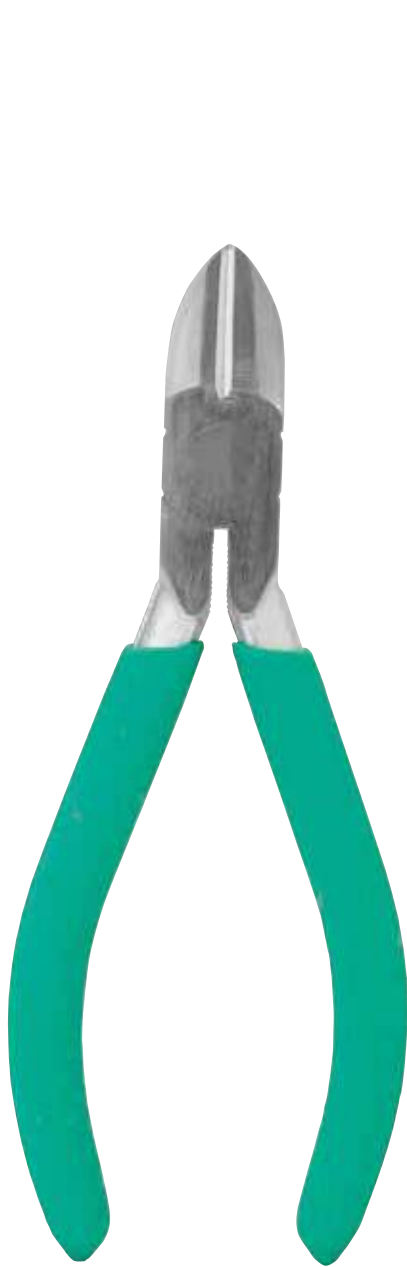
[Sectional Drawing]



*Please remove the fallen cap from a mouth.

Wire Cutter

*Cut retainer wire, clasp wire.



YS-601

No.22601

*Cut up to .032" (ø0.80mm)



YS-602
KI

No.22602

*Cut up to .045" (ø1.10mm)



YS-603
Standard

No.22603

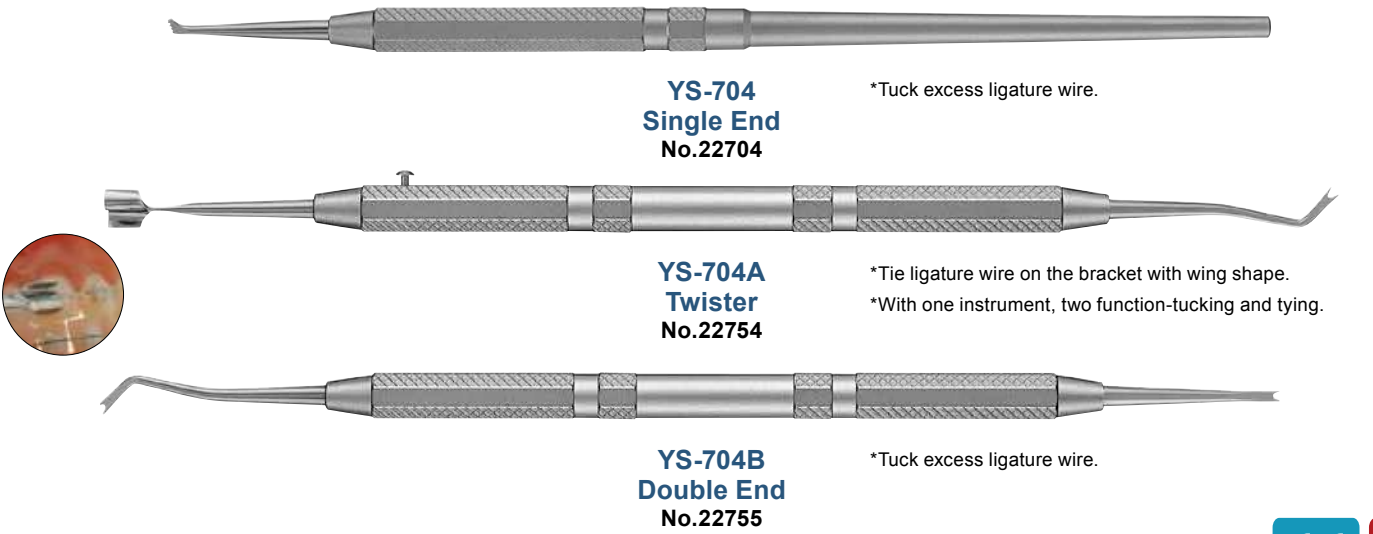
*Cut up to .048" (ø1.20mm)

Tying Pliers

*Tie ligature wire on the bracket.



Ligature Director



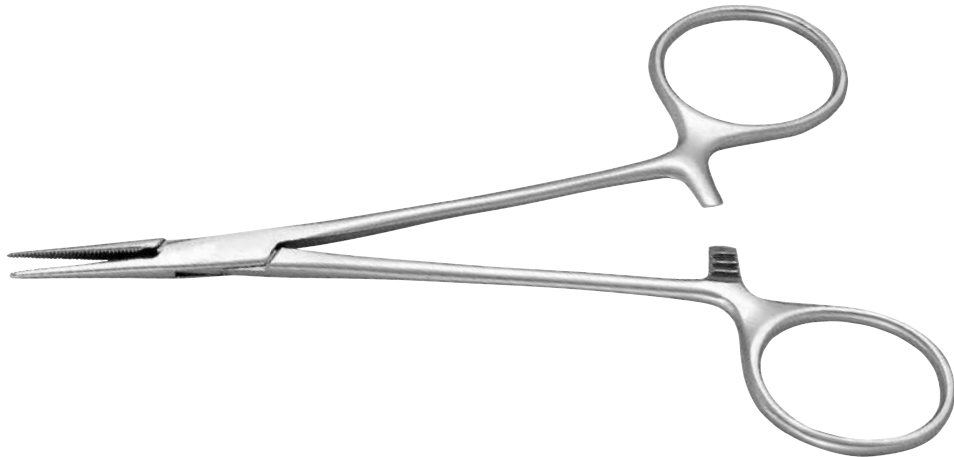
Arch Wire Director



Module Pliers

*Put module on the bracket.

*With ultra thin tips, easy to insert into the mouth.

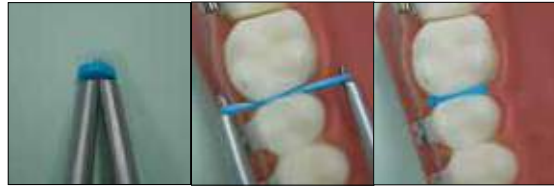


Separator

*Before applying band, used for placement of separating elastic.



YS-551
No.22551



Band Seater

*Set band by patient's own occlusal force.

*Tip can be replaced.



YS-703
No.22703

Band Pusher

*Insert band.



YS-701
No.22753



Bracket Tweezers

*Hold firmly the bracket by groove at the tips.

*At the end of the handle with measure (3.5mm, 4.0mm, 4.5mm, 5.0mm) helps bracket height and angulation.



Surplus Cement Remover

*Remove surplus bonding material smoothly.



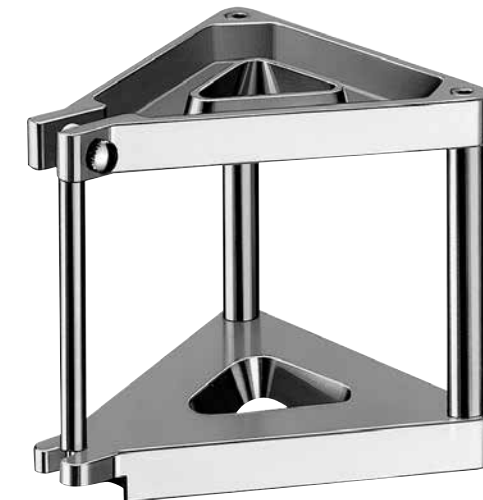
#1
No.13205



#2 for Posterior
No.13206

Articulator

-for Construction Bite-



YS-714
No.22714

YS-802A
No.22822



*Wax form does not include.

-Example of Practicing with the Typodont Practice Model-



1) Attach the ORT various Wax Form to the Typodont Ocluder by applying molten wax with an instrument.



2) Remove the jaws with the black base as pictured.



3) Dip the jaws into 55-60°C warm water.



4) Lift the jaws from the warm water and dip into cool water. Observe the result.

Typodont Teeth

*Education tool to learn the appropriate orthodontic force and result of the teeth position.

*Also used for practice of placing the brackets and ligatures.

*Metal tooth root for quick heat conduction.

No.22834
(Parts 28 teeth)



Image

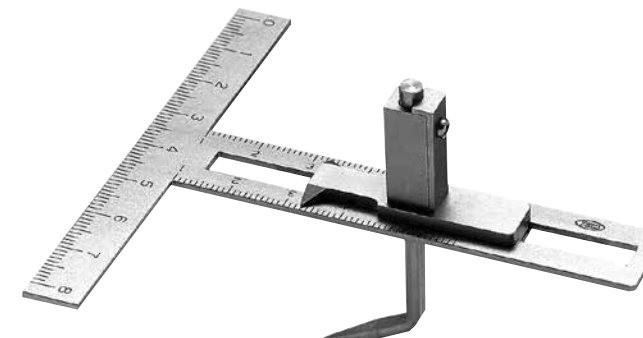


*Wax form does not include.

Model Measuring Device

Contents Main body, Chart (25 sheets)

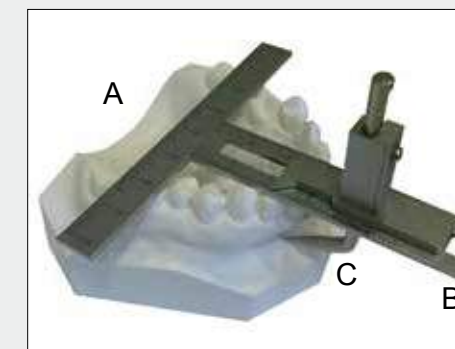
YS-34 with Chart
No.22934



*This measuring device is for the purpose of measuring following length/ Width below on a tooth model, constituting T shape ruler and (vertical, horizontal) indicator needle. The indicator needle designed to slide on its vertical surface.

*This measuring device is designed to measure following (1),(2),(3).
For the measurement of (4) please use separately sold Orthodontic Caliper as the direction mentioned below.

- (1) Length of dental arch
- (2) Width of dental arch
- (3) Length of BASAL ARCH
- (4) Width of BASAL ARCH



[Direction of how to use]

- A.Horizontal part
- B.Vertical part
- C.Indicator needle

Standard deviation table for width of dental crown, dental arch, BASAL ARCH is also available.

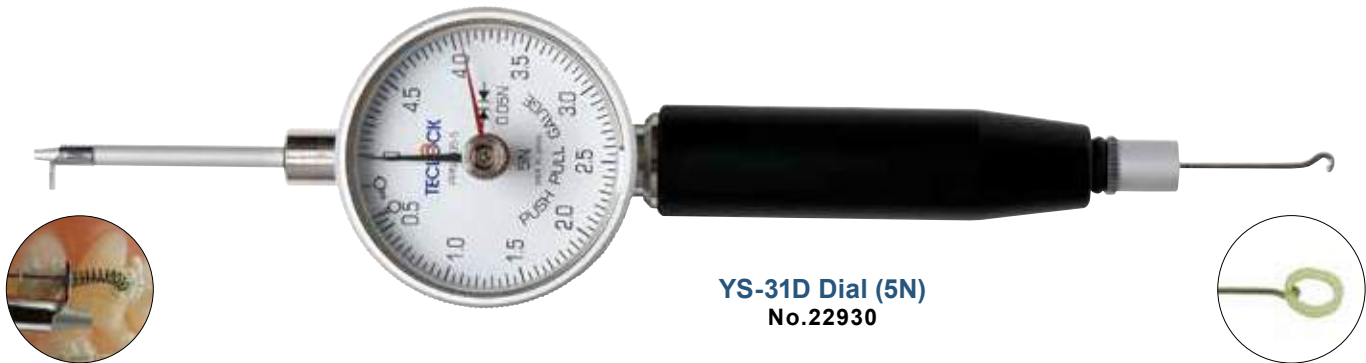
- 1) Width of dental arch
With horizontal part A measure its distance between buccal sides of first premolar tooth.
- 2) Length of dental arch
Fitting in its base line of horizontal part A to the point of first molar teeth in distal part. Then measure the distance to incisal edge of a central incisor with vertical part B.
- 3) Length of BASAL ARCH
Setting horizontal part A as above picture indicates, slide the indicator needle C to fit in the bottom point of the root of a central incisor tooth.
- 4) Width of BASAL ARCH
Measure the bottom point of the root of first premolar tooth with Orthodontic Calipers.

Tension Gauge

Measure the force of coil spring and elastic.

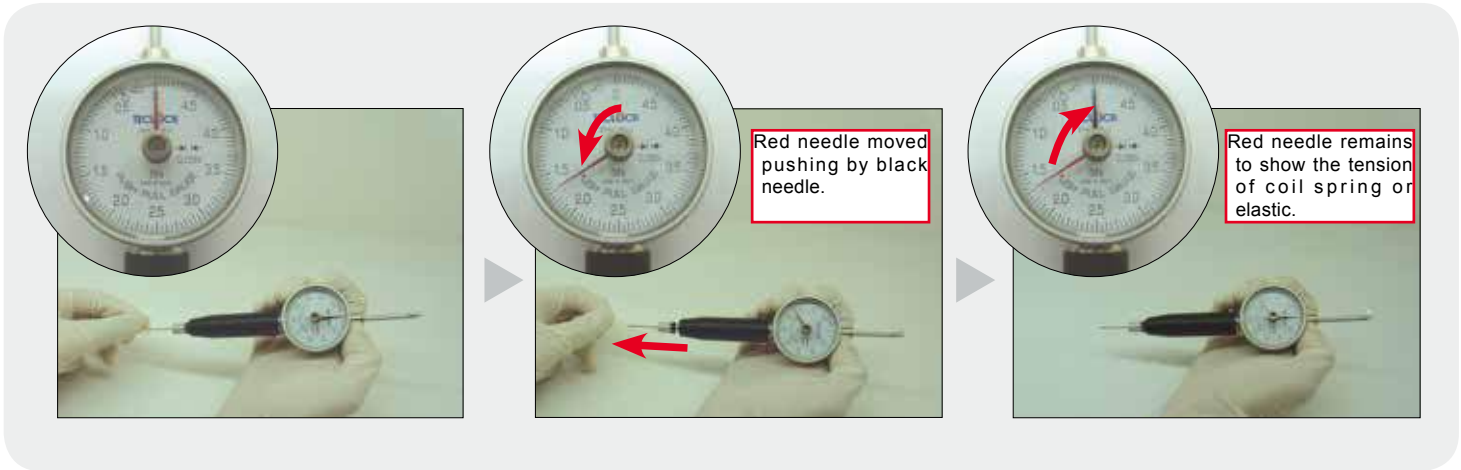


YS-31 5N
No.22955

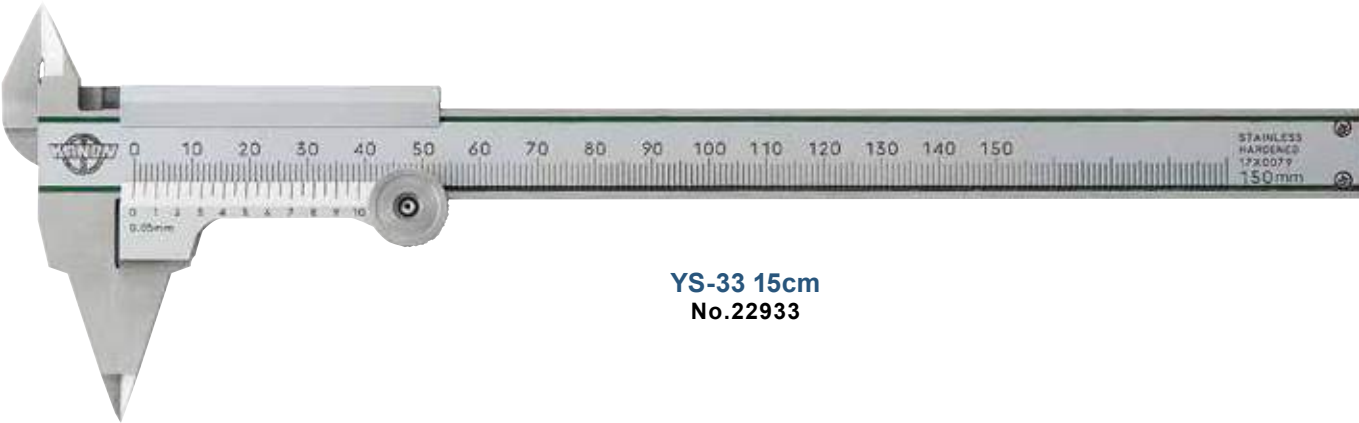


YS-31D Dial (5N)
No.22930

*1N \approx 100g



Orthodontic Calipers



YS-33 15cm
No.22933

Boone Gauge

- *Check position of bracket on tooth.
- *Measure bracket height 4.5mm, 4.0mm and 3.5mm.

YS-39
No.22939



Handy Torch

- *Sharp flame is suitable for delicate work.
- *Gas is empty at the time of delivery.



Ortho
No.27907

Size / W76.6xD54.5xH154mm



Name of parts



Specifications

- *Weight / 245g (with the screen board)
- *Gas Volume / 15g
- *Combustion Time / 80min.
- *Flame Temperature / 1300°C (blue flame)



*The head is given 70° angle to avoid direct dripping of wax on the nozzle when used lying down on the table.



YS-706

No.22706

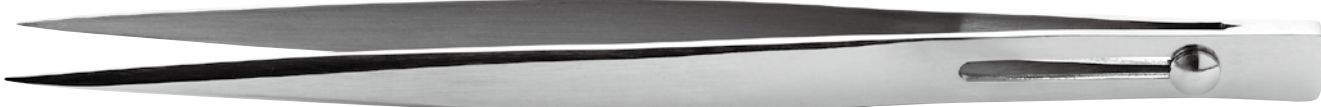


Locking Tweezers



YS-707S

No.22707



YS-708L

No.22708



Chin Cap



No.22868

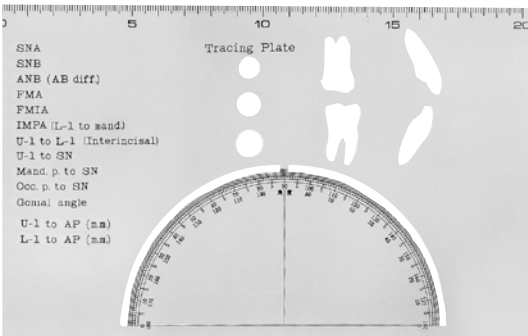


Maxillary Traction

No.22869



Tracing Plate



YS-40

No.22940

Size / W210xD130mm

Color Tray



-Premium-

*Aluminium

*Color coded for easy identification.

*By an edge with height, the impression of a frenum or buccal mucous membrane can be taken firmly.

*Easily bendable for a custom fit.

*Impression materials stick to alminium well because of features of alminium itself,also they are difficult to be removed when in fitting.

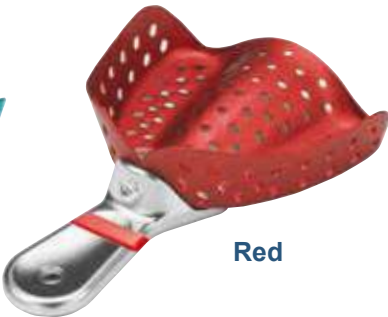
Upper



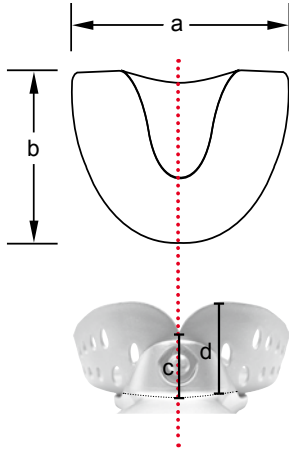
Pink



Blue



Red



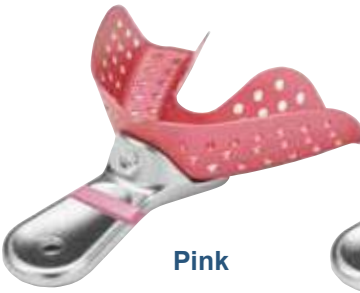
Gold



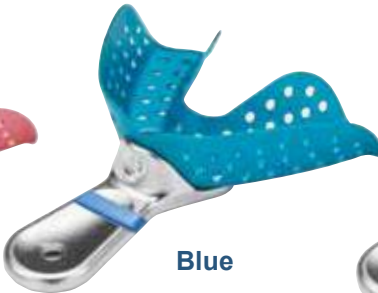
Violet

No.	Description	Size (mm)			
		a	b	c	d
19101	Pink	57	48	12	20
19102	Blue	62	54	12	20
19103	Red	68	60	12	22
19104	Gold	75	65	12	22
19105	Violet	84	70	13	22

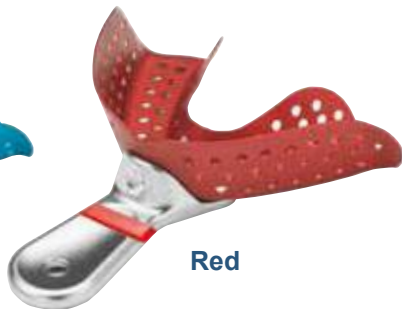
Lower



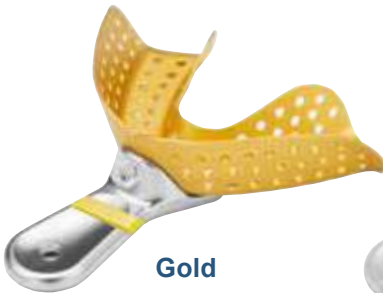
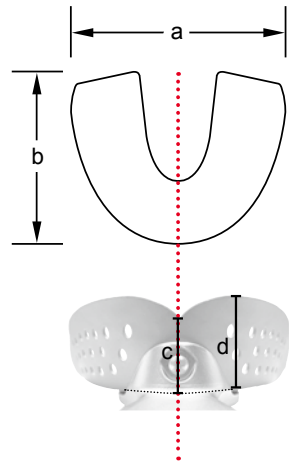
Pink



Blue



Red



Gold



Violet

No.	Description	Size (mm)			
		a	b	c	d
19111	Pink	62	44	15	20
19112	Blue	70	48	15	20
19113	Red	75	50	15	20
19114	Gold	82	53	17	22
19115	Violet	88	55	17	22