

EDTA

*Decalcifies canal walls • Eases Instrumentation
Buffered to a neutral pH*

EDTA Semi-Gel **File-Rite™**

FILE 4 x 5 gm syringes
+ 50 x 30-gauge needles

**For direct dispensing into canals
using 30-gauge needles**

- 17% EDTA gel with lubricant
- Decalcifies canal walls
- Facilitates instrumentation
- Minimizes binding and breaking of files
- Rinses out easily with irrigation



EDTA Viscous Gel **Prep-Rite™ RC**

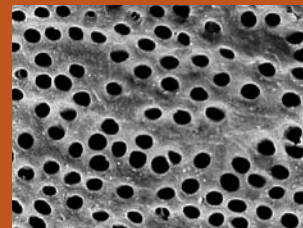
PRC 4 x 5 gm syringes

**For picking up on files using the traditional
technique. Contains peroxide for effervescing
action.**

- 15% EDTA gel with lubricant
- Decalcifies canal walls
- Facilitates instrumentation
- Minimizes binding and breaking of files
- Rinses out easily with irrigation



EDTA Effectively Decalcifies Canal Walls



SEM shows smear layer removal
and opened dentinal tubules
following treatment with File-Rite
17% EDTA semi-gel.